

C0

COVER SHEET  
DRAWING NO./SHEET NO.

CODE GALAXY

SHOPS AT WHITESTONEN - SUITE #184  
CEDAR PARK, TEXAS

**SITE LOCATION**



**PROJECT SUMMARY**

BUILDING CONSTRUCTION TYPE: TYPE II-B  
 GROSS SQUARE FOOTAGE: 1,560 SF TOTAL  
 OCCUPANCY TYPE: B (BUSINESS)  
 OCCUPANCY LOAD SUMMARY: 16 OCCUPANTS (100 SF / OCCUPANT)  
 MAXIMUM TRAVEL DISTANCE: 53 FEET  
 FIRE SUPPRESSION: WET PIPE FIRE SPRINKLER SYSTEM

**APPLICABLE BUILDING CODES**

2014 NATIONAL ELECTRIC CODE WITH LOCAL AMMENDMENTS  
 2015 INTERNATIONAL FIRE CODE WITH LOCAL AMMENDMENTS  
 2015 INTERNATIONAL CODES (BUILDING, PLUMBING, MECHANICAL, AND GAS)  
 2015 INTERNATIONAL ENERGY CONSERVATION CODE

**SHEET LIST**

- C0 COVER SHEET
- C1 CODE SHEET
- D1 DEMO PLAN
- A0 SITE PLAN
- A1 FLOOR PLAN
- A2 FINISH PLAN
- A3 REFLECTED CEILING PLAN

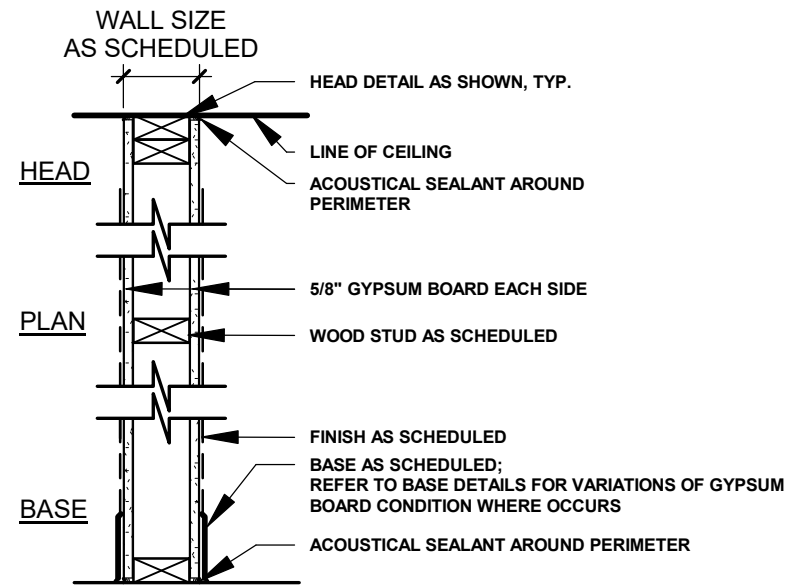


**PROJECT SUMMARY**

BUILDING CONSTRUCTION TYPE: TYPE II-B  
 GROSS SQUARE FOOTAGE: 1,560 SF TOTAL  
 OCCUPANCY TYPE: B (BUSINESS)  
 OCCUPANCY LOAD SUMMARY: 16 OCCUPANTS (100 SF / OCCUPANT)  
 OCCUPANT LOAD CALCULATION: 1,560 SF / 100 = 16 OCCUPANTS TOTAL  
 MAXIMUM TRAVEL DISTANCE: 53 FEET  
 FIRE SUPPRESSION: WET PIPE FIRE SPRINKLER SYSTEM

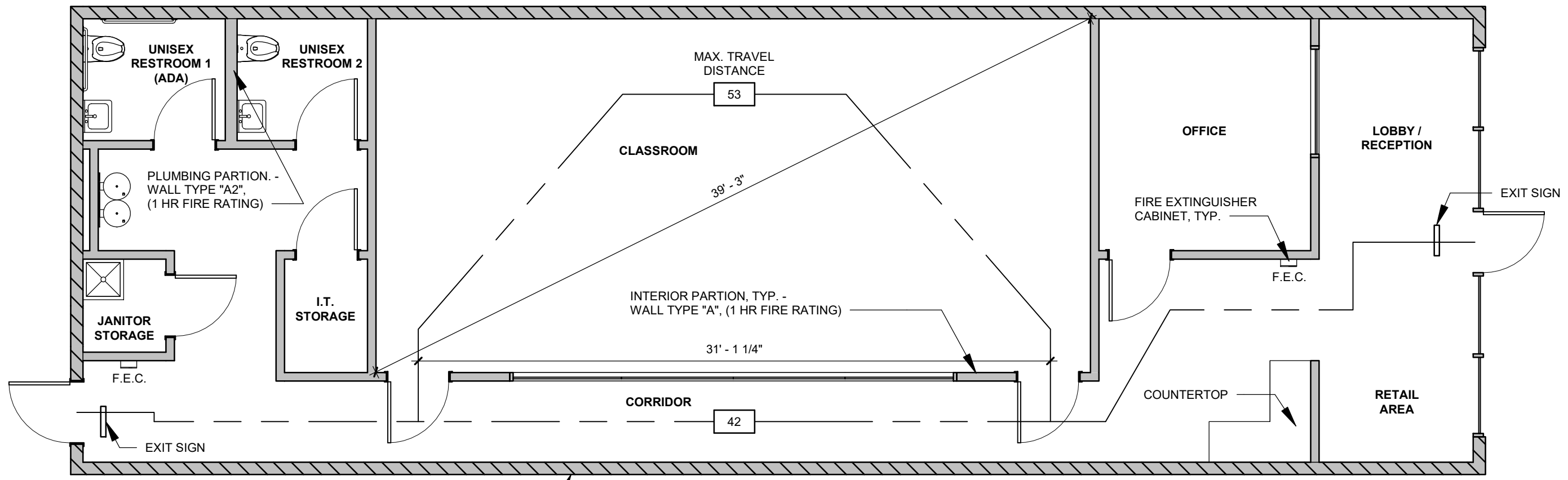
**APPLICABLE BUILDING CODES**

2014 NATIONAL ELECTRIC CODE WITH LOCAL AMMENDMENTS  
 2015 INTERNATIONAL FIRE CODE WITH LOCAL AMMENDMENTS  
 2015 INTERNATIONAL CODES (BUILDING, PLUMBING, MECHANICAL, AND GAS)  
 2015 INTERNATIONAL ENERGY CONSERVATION CODE



WALL TYPE	STUD SIZE	WALL SIZE	STUD SPACING	FIRE RATING	UL DESIGN	STC RATING
A1	2x4	4 3/4"	16" O.C.	1 HR	U305	-
A2	2x6	6 3/4"	16" O.C.	1 HR	U305	-

**02 TYP. PARTITION TYPE**  
 SCALE: 1" = 1'-0" REF:



DEMISING AND EXTERIOR PARTION, TYP. - SIMILAR TO WALL TYPE "A1", BUT ON EXISTING STUDS (1 HR FIRE RATING)

**01 CODE PLAN**  
 SCALE: 3/16" = 1'-0" REF:

C1

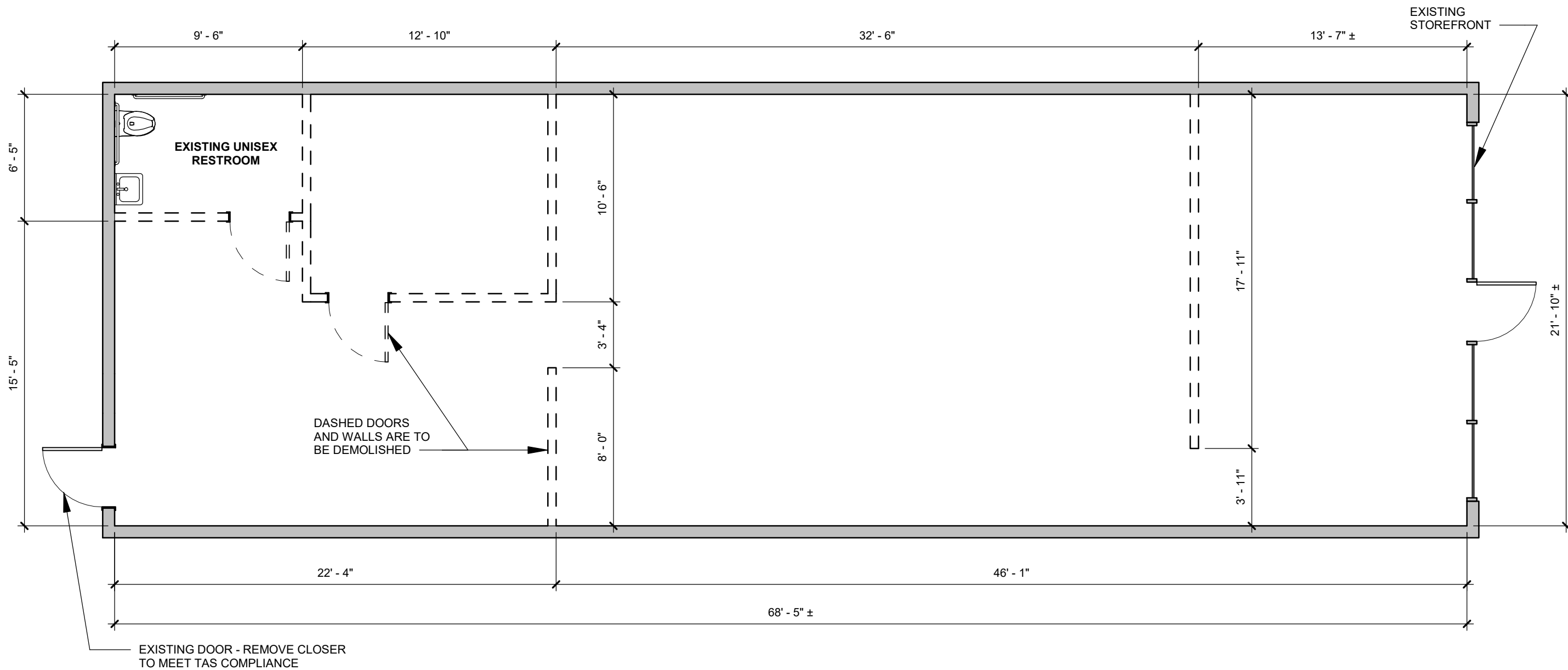
CODE SHEET  
 DRAWING NO./SHEET NO.

CODE GALAXY

SHOPS AT WHITESTONEN - SUITE #184  
 CEDAR PARK, TEXAS

CODE GALAXY





**GENERAL NOTES:**

1. ALL MEASUREMENTS ARE TO BE FIELD VERIFIED PRIOR TO DEMOLITION.
2. EXISTING PARTITIONS ARE 4-3/4" IN THICKNESS AND CONSIST OF 1 LAYER OF 5/8" GYP. BOARD ON EACH SIDE OF 2X4 WOOD STUDS.
3. DEMOLITION WORK IS TO COMPLY WITH BUILDING, FIRE, AND LIFE SAFETY CODES.
4. DASHED LINES INDICATE EXISTING WALLS AND DOORS TO BE REMOVED PRIOR TO CONSTRUCTION OF THE LAUNCH AFTER SCHOOL SPACE.

01
DEMOLITION PLAN

SCALE: 3/16" = 1'-0"

REF:

D1

DEMO PLAN  
DRAWING NO./SHEET NO.

LAUNCH AFTER SCHOOL

SHOPS AT WHITESTONEN - SUITE #184  
CEDAR PARK, TEXAS





01

# SITE PLAN

SCALE: NTS

REF:

A0

SITE PLAN

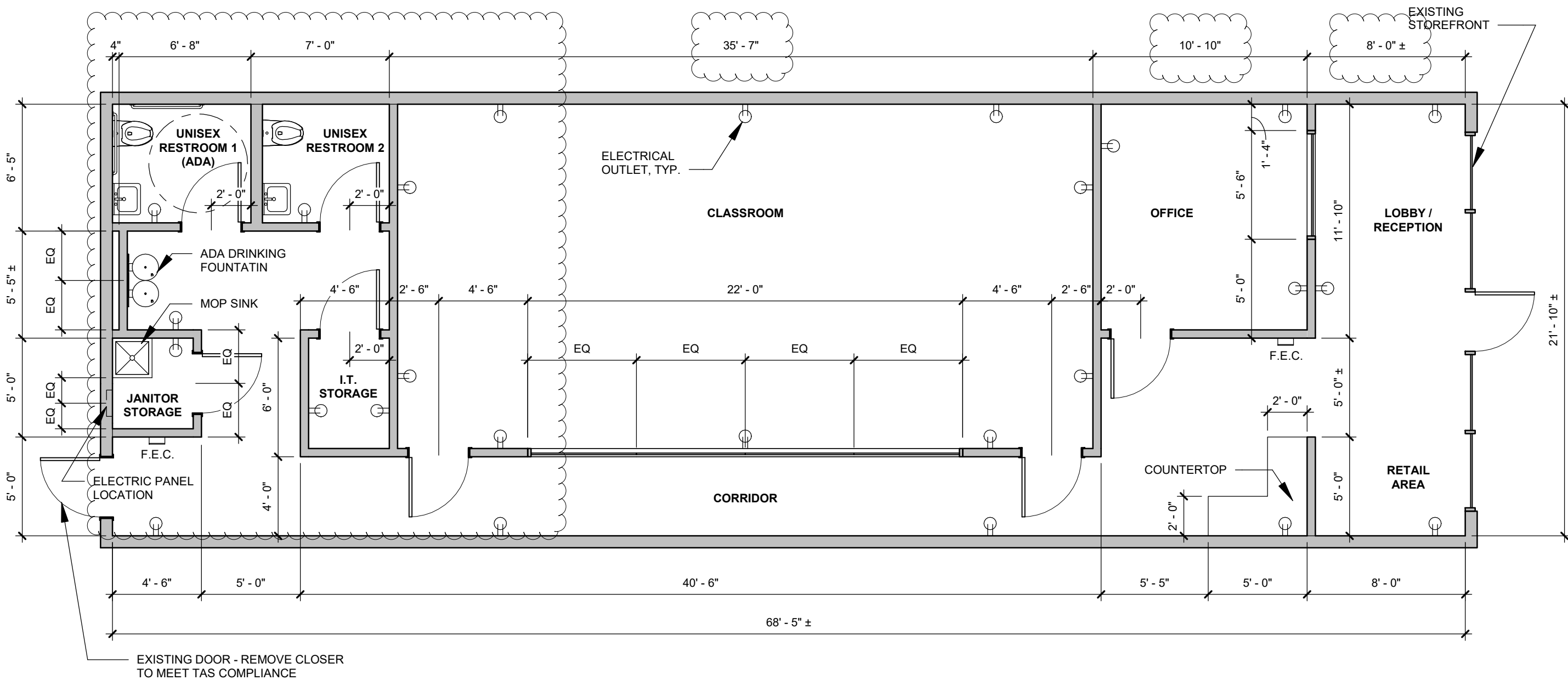
DRAWING NO./SHEET NO.

CODE GALAXY

SHOPS AT WHITESTONEN - SUITE #184  
CEDAR PARK, TEXAS

CODE  
GALAXY





**GENERAL NOTES:**

1. DOORS ARE DIMENSIONED BY CENTERLINE AND 36" WIDE BY 7'-0" HIGH TYP.
2. TYP. PARTITIONS ARE 4-3/4" IN THICKNESS AND CONSIST OF 1 LAYER OF 5/8" GYP. BOARD ON EACH SIDE OF 2X4 WOOD STUD FRAMING. THE ONLY EXCEPTION BEING THE PLUMBING WALL IN "UNISEX RESTROOM 2" WHICH CONSISTS OF 2X6 WOOD STUD FRAMING.
3. USE MOISTURE RESISTANT GYP. BOARD AT WET AREAS, I.E. KITCHENS AND RESTROOMS. USE TILE BACKER BOARD AT TILE FINISH.
4. ALL DOORS, APPLIANCES, AND FIXTURES TO BE INSTALLED IN ACCORDANCE WITH 2012 TEXAS ACCESSIBILITY STANDARDS.

**01 FLOOR PLAN**

SCALE: 3/16" = 1'-0"

REF:

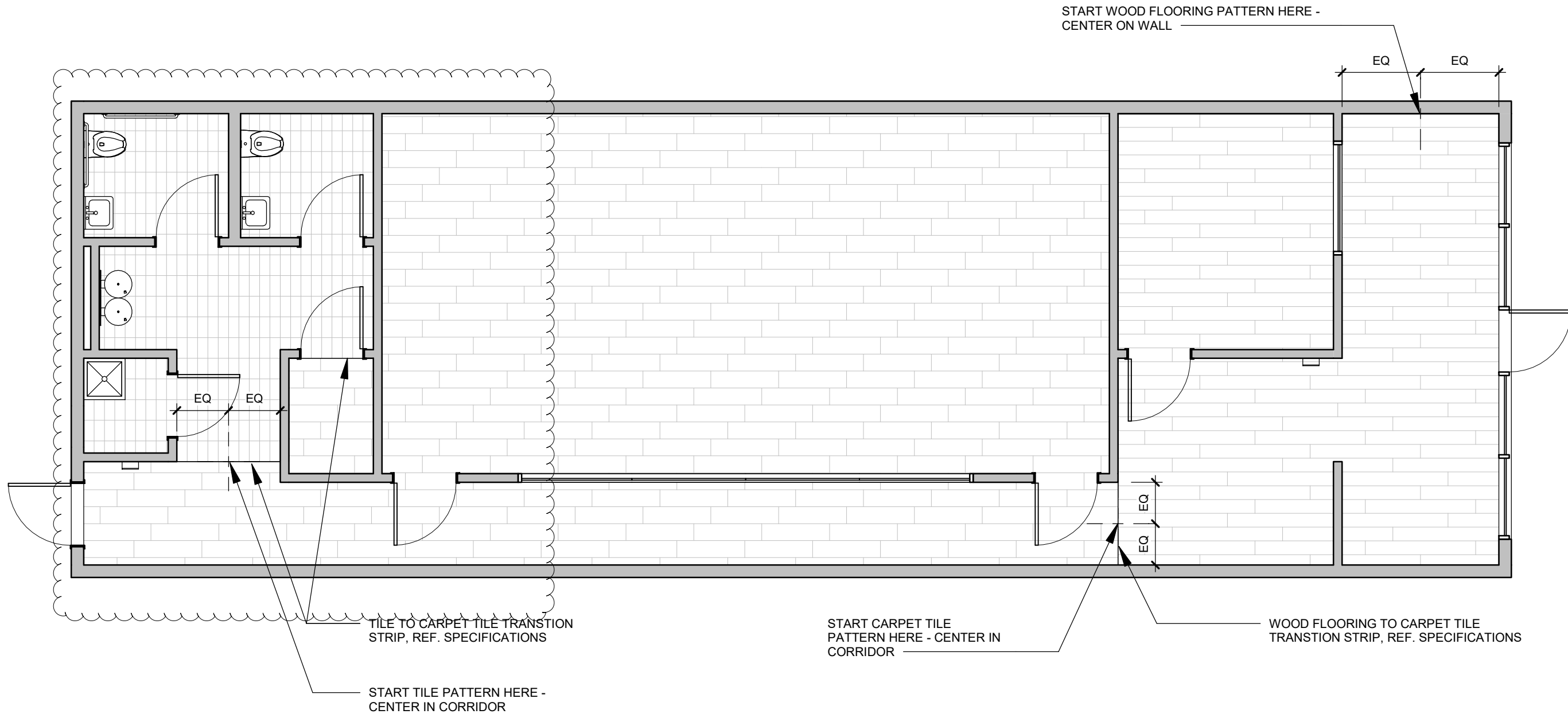
A1

FLOOR PLAN  
DRAWING NO./SHEET NO.

CODE GALAXY

SHOPS AT WHITESTONEN - SUITE #184  
CEDAR PARK, TEXAS





**01 FLOOR FINISH PLAN**

SCALE: 3/16" = 1'-0"

REF:

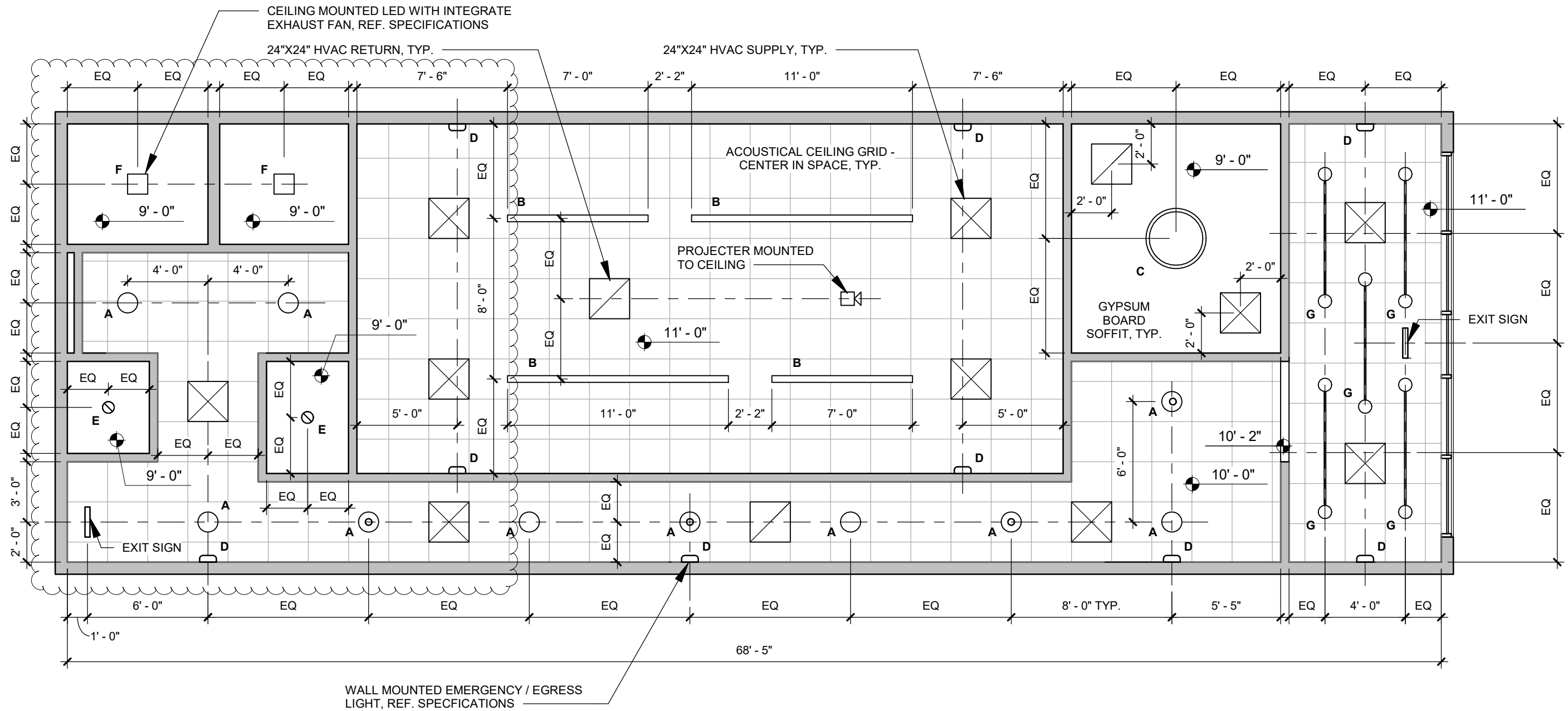
A2

FINISH PLAN  
DRAWING NO./SHEET NO.

CODE GALAXY

SHOPS AT WHITESTONEN - SUITE #184  
CEDAR PARK, TEXAS





**REFLECTED CEILING PLAN NOTES:**

1. TYP. GYPSUM BOARD SOFFITS ARE 4-1/8" IN THICKNESS AND CONSIST OF 1 LAYER OF 5/8" GYPSUM BOARD ON THE UNDERSIDE OF 2X4 WOOD STUD FRAMING.
2. ALL CEILING HEIGHTS ARE DIMENSIONED FROM ABOVE FINISH FLOOR. CEILING FIXTURES ARE DIMENSIONED FROM CENTERLINE OF FIXTURE TO OUTSIDE FACE OF FINISH, TYP.
3. ALL GYPSUM BOARD SOFFITS ARE TO BE PAINTED SHERWIN WILLIAMS PURE WHITE (SW 7005).
4. ACOUSTICAL CEILING GRID SYSTEM IS TO BE PAINTED SHERWIN WILLIAMS IRON ORE (SW 7069). HVAC SUPPLIES AND RETURNS IN ACOUSTICAL GRID SYSTEM ARE TO BE PAINTED TO MATCH.
5. REFERENCE CUT SHEETS PROVIDED BY ARCHITECT FOR FIXTURE DESIGNATIONS AND MOUNTING HEIGHT. DO NOT INSTALL WITHOUT FINAL APPROVAL FROM ARCHITECT OR OWNERS.

01

**REFLECTED CEILING PLAN**

SCALE: 3/16" = 1'-0"

REF:

**GENERAL ELECTRICAL NOTES**

CONTRACTOR SHALL VERIFY ALL REQUIREMENTS FOR TELEPHONE AND POWER SERVICES WITH RESPECTIVE UTILITY COMPANIES PRIOR TO SUBMITTING THE BID. IF THEIR REQUIREMENTS ARE AT A VARIANCE WITH THOSE SHOWN ON THE PLANS, THE CONTRACTOR SHALL INFORM THE ARCHITECT IMMEDIATELY. ALL COSTS INCURRED WITH THE UTILITY COMPANIES FOR SERVICES SHALL BE INCLUDED IN THE BID PRICE. IF SUCH COSTS ARE NOT AVAILABLE AT BID TIME, THE CONTRACTOR SHALL INCLUDE WITH BID, A LETTER FROM A RESPONSIBLE PARTY WITH THE UTILITY COMPANY STATING SUCH, AND COSTS WILL THEN BE EXCLUDED FROM THE BID PRICE.

THIS CONTRACTOR SHALL VERIFY EXACT REQUIREMENTS FOR MECHANICAL EQUIPMENT FROM MANUFACTURERS RECOMMENDATIONS PRIOR TO ROUGHING IN CONDUIT SIZE, WIRE SIZE AND CIRCUIT PROTECTION SIZE ACCORDINGLY. IF REQUIREMENTS ARE LARGER THAN CALLED FOR ON THE ELECTRICAL PLANS, NOTIFY THE ARCHITECT IMMEDIATELY.

CONTRACTOR SHALL VISIT THE SITE OF THE WORK PRIOR TO SUBMITTING BID TO EXAMINE CAREFULLY LOCAL CONDITIONS AND DIFFICULTIES TO BE ENCOUNTERED. ANY DISCREPANCY BETWEEN PLANS AND EXISTING CONDITIONS SHALL IMMEDIATELY BE BROUGHT TO THE ATTENTION OF THE ARCHITECT.

**COMPLIANCE STATEMENT**

ELECTRICAL SHALL COMPLY WITH ALL PROVISIONS OF THE 2017 NEC, NFPA 70 NEC 517 AND OTHER APPLICABLE CODES AND ORDINANCES.

**ELECTRICAL NOTES**

ALL ELECTRICAL WIRING EXPOSED TO VIEW IN EMT  
 ALL ELECTRICAL IN CONDUITS, ARMORED CABLE OR BLUE CARLON CONDUIT  
 ALL 110V EQUIPMENT RECEPTACLES MUST BE GFCI PROTECTED PER NEC 210.8(B)(2).  
 ALL CONDUITS RUN PARALLEL OR PERPENDICULAR TO STRUCTURAL FRAMING.  
 ALL LO-VOLT WIRING BY OTHERS UNDER SEPARATE PERMIT.

INCREASE WIRE SIZES FOR RUNS OVER 100' PER NEC 2017.

**CLARIFICATION NOTES**

ALL GENERAL PURPOSE RECEPTACLES WITHIN 6 FEET OF A SINK SHALL BE GFCI PROTECTED. ALL 125V SINGLE PHASE EQUIPMENT RECEPTACLES TO BE GFCI PROTECTED ON GFCI BREAKER CIRCUIT.

**ELECTRICAL NOTE:**

General Contractor to coordinate all outlet and switch locations on site with Architect prior to final installation and refer to Architectural Plans for hard conduit design.

**Electrical New Panel 1 Schedule**

VOLTS/PHASE/WIRE: 120/208/3/4		PANEL SIZE: 200 A		MAIN TYPE & SIZE: 200 A MCB			CABINET: NEMA 3R		MIN SCC: 21000		FED FROM: ----	
CIRCUIT NO.	AREA SERVED	TRIP AMPS	NO. POLES	PHASE LOAD VA			NO. POLES	TRIP AMPS	AREA SERVED	CIRCUIT NO.		
				A	B	C						
1	GFCI ROOF RECEPT	20	1	180	0	0						
3	RECEPT. WATER FOUNT	20	1	5000	5000	5000	3	60	RTU-1	2,4,6		
7	RECEPT. CORRIDOR	20	1	0	0	0	1	20	SPARE	5		
9	RECEPT. OFFICE	20	1	540	0	0						
11	RECEPT. CLASS	20	1	0	1440	0	1	20	RECEPT.CLASS	10		
13	LIGHT LOBBY/OFFICE/EMERGENCY	20	1	0	0	720						
15	LED STRIP LIGHT CLASSROOM	20	1	0	0	0	1	20	RECEPT. RESTRM, JANITOR	12		
17	WATER HEATER	30	1	0	0	2000						
19	SPARE	20	1	0	0	0	1	20	LIGHT CORRIDOR,RESTROOM/EMERGENCY	14		
				0	0	0	1	20	SPARE	16		
				0	0	0	1	20	SPARE	18		
				0	0	0	1	20	SPARE	20		
CONNECTED LOAD				6380	8080	7900	22.4 KVA					

LOAD CATEGORY	CONN. LOAD	DEMAND FACTOR	EST. LOAD
Lighting	0.3	1.25	0.4
Receptacles (0 - 10 KVA)	7.1	1.00	7.1
Equipment	15.0	1.00	15.0
<b>TOTAL</b>	<b>22.4</b>		<b>22.4</b>

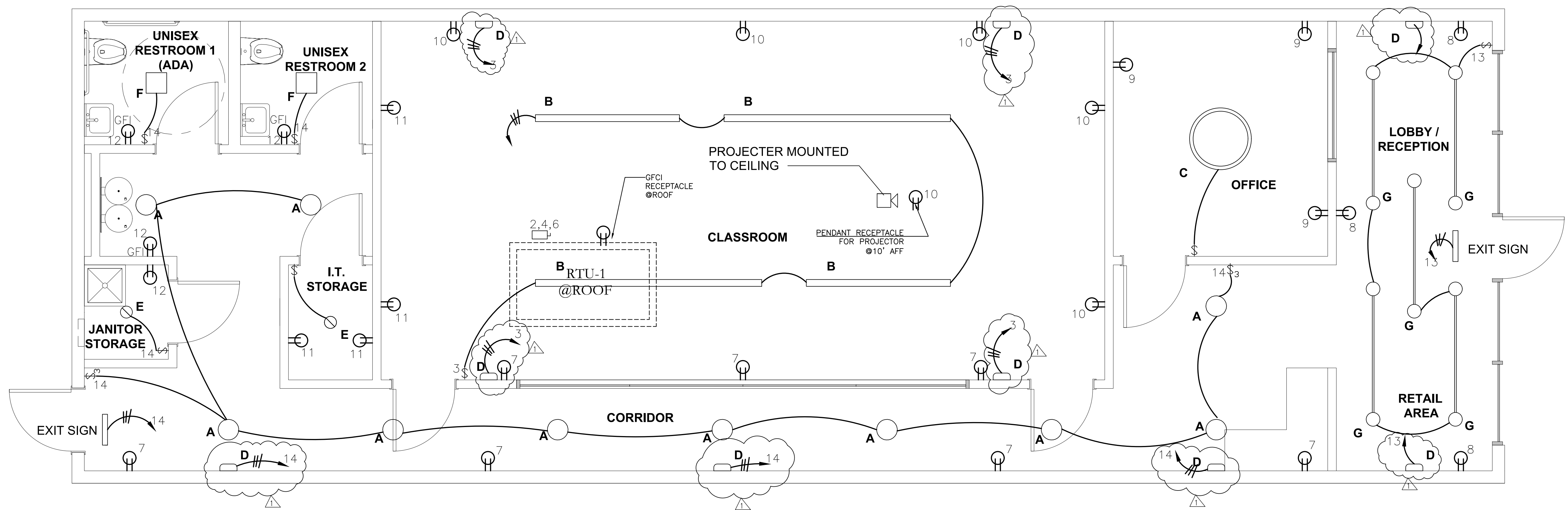
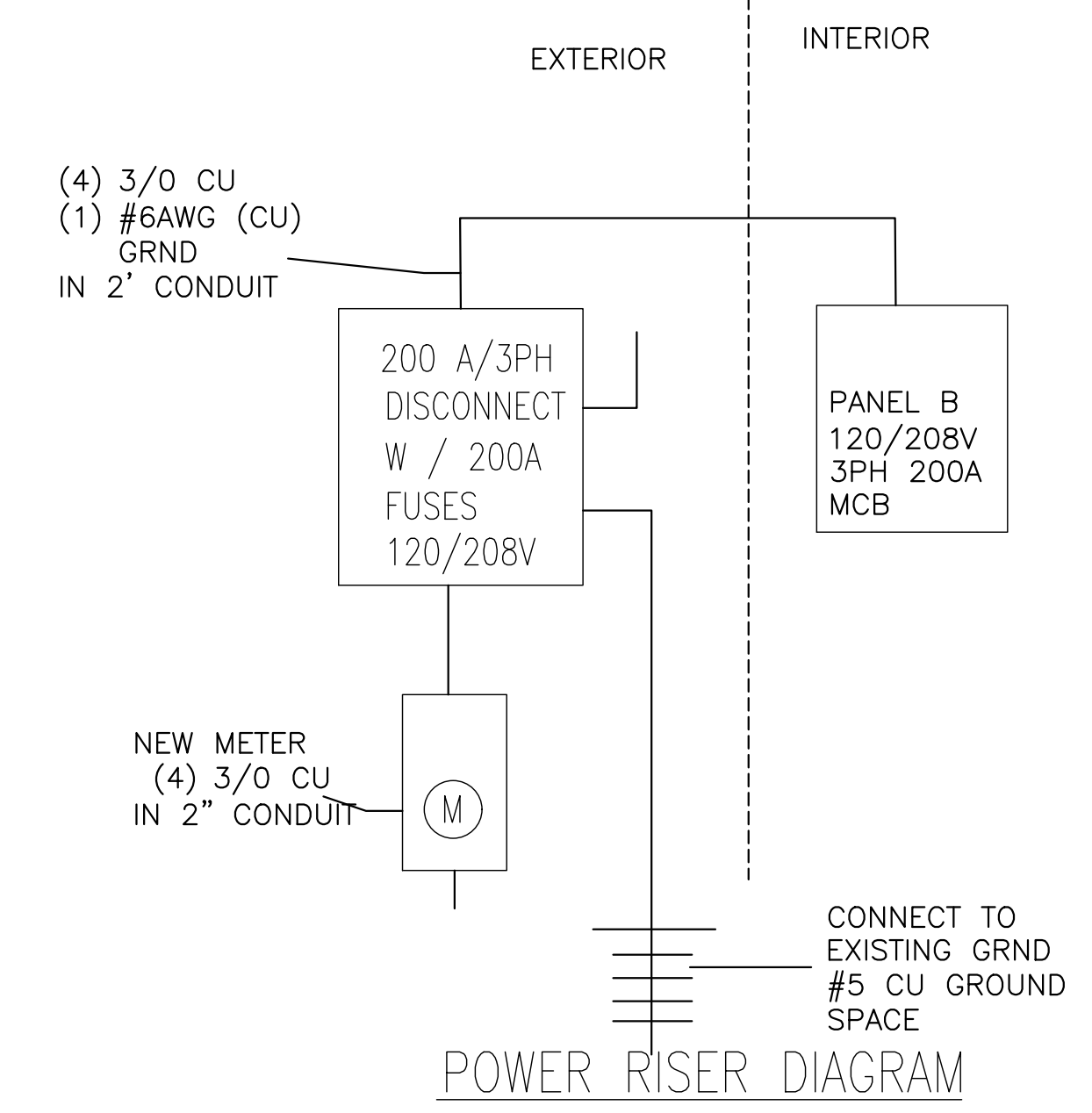
CONNECTED LOAD	
VA	AMPS
180	1.50
15000	41.64
1100	9.17
0	0.00
540	4.50
360	3.00
540	4.50
1440	12.00
720	6.00
180	1.50
300	2.50
0	0.00
0	0.00
2000	16.67
0	0.00
0	0.00
0	0.00
0	62.1

BREAKER SIZE	WIRE SIZE
20	12
30	10
40	8
50	8
60	6
70	4

**LIGHTING SCHEDULE**

- A PRODUCT: OPAL GLOBE PENDANT  
 MANUFACTURER: LURALINE LIGHTING  
 MODEL:712 CORD
- B PRODUCT:LINEAR DIRECT LED PENDANT  
 MANUFACTURER: FINELITE, INC  
 MODEL: HP-4, DIRECT
- C PRODUCT: CIRCULAR DIRECT LED PENDANT  
 MANUFACTURER: DELRAY LIGHTING  
 MODEL: UNO (48" DIAMETER)
- D PRODUCT: LED EMERGENCY WALL PACK  
 MANUFACTURER: LITHONIA LIGHTING  
 MODEL:ELM2LF
- E PRODUCT: 4" DOWNLIGHT  
 MANUFACTURER: LITHONIA LIGHTING  
 MODEL: LDN4
- F PRODUCT: ROUND LED WALL SCONCE  
 MANUFACTURER: ASTRO LIGHTING  
 MODEL: ECLIPSE ROUND 350
- G SURFACE MOUNTED DOWNLIGHT

LEGEND	
☐	CEILING RECESSED RECEPT.
☐	FLOOR RECEPT.
☐	DUPLEX RECEPT.
☐	GROUND FAULT RECEPT.
☐	WEATHER PROOF RECEPT.
☐	SINGLE POLE SWITCH
☐	3 WAY POLE SWITCH
☐	DISCONNECT



**1 ELECTRICAL PLAN**  
 E001 SCALE: 1/4"=1'-0"



06-18-2019

**Lightning Engineering, LLC**  
 4456 TAMAMI TRAIL UNIT B14  
 PORT CHARLOTTE, FL 33980  
 PH 941-391-5980  
 FAX 941-975-8195

I HEREBY CERTIFY AS THE BUILDING DESIGN ENGINEER OF RECORD, THAT THE BUILDING DESIGN AS SHOWN ON THESE PLANS AND AS ACCOMPANIED BY DESIGN & SUPPORT DOCUMENTS CONFORMS TO THE 2015 INTERNATIONAL BUILDING CODE. THIS CERTIFICATION DOES NOT INCLUDE ROOF TRUSS COMPONENTS OF W/SH. THE TRUSS DESIGN ENGINEER IS THE ENGINEER OF RECORD. THE PLANS HAVE BEEN PREPARED IN COMPLIANCE WITH THE 2015 INTERNATIONAL BUILDING CODE WITH SUPPLEMENTS.

**LAUNCH AFTER SCHOOL**  
 202 WALTON WAY, CEDAR PARK, TX 78613

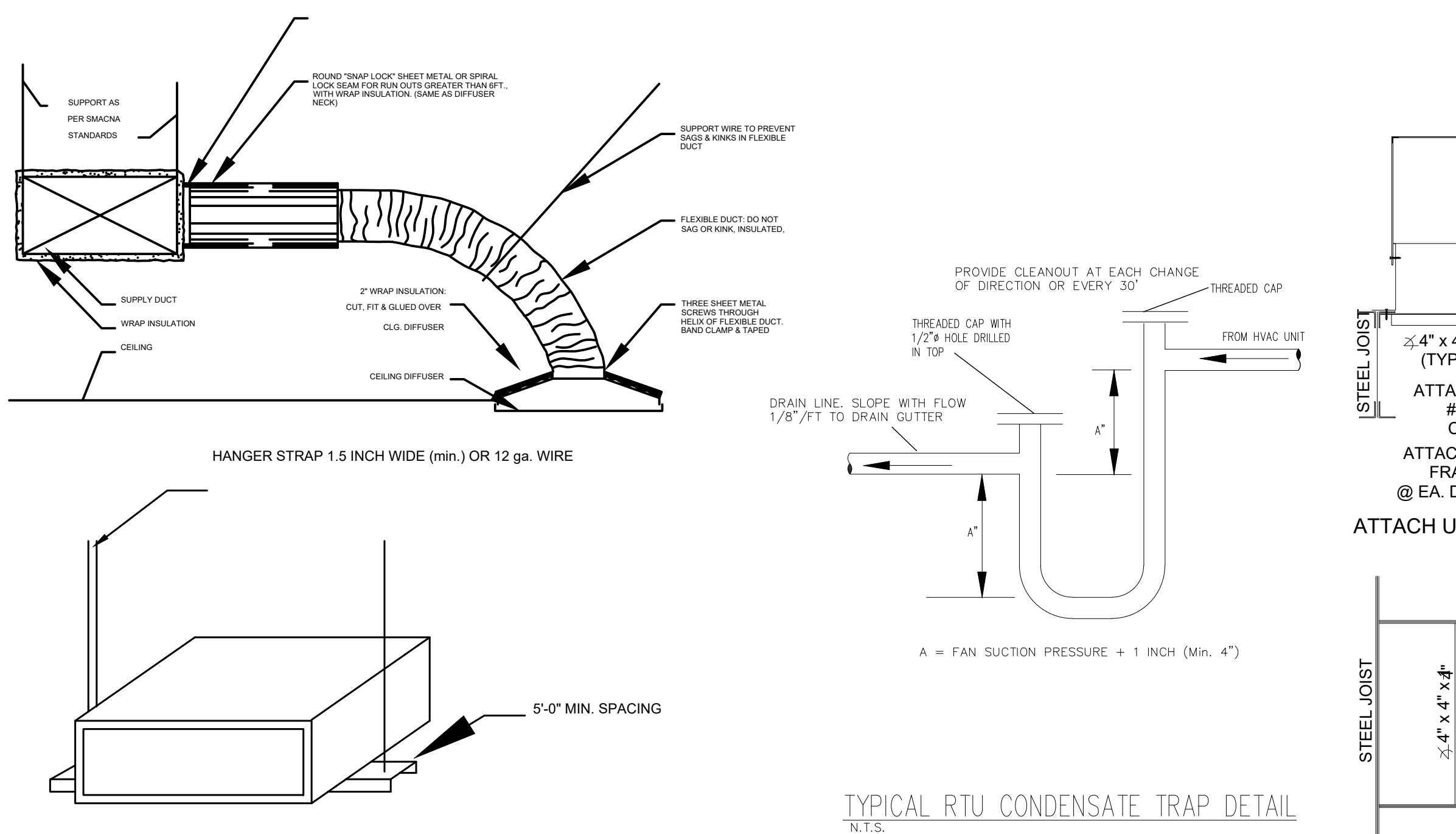
PROJECT NO:1913354

**ELECTRICAL**  
 SCALE: PER PLAN

DRAWN BY: BK	PAGE: E001
REVISION 1: DATE	REVISION 2: DATE
SCALE: PER PLAN	

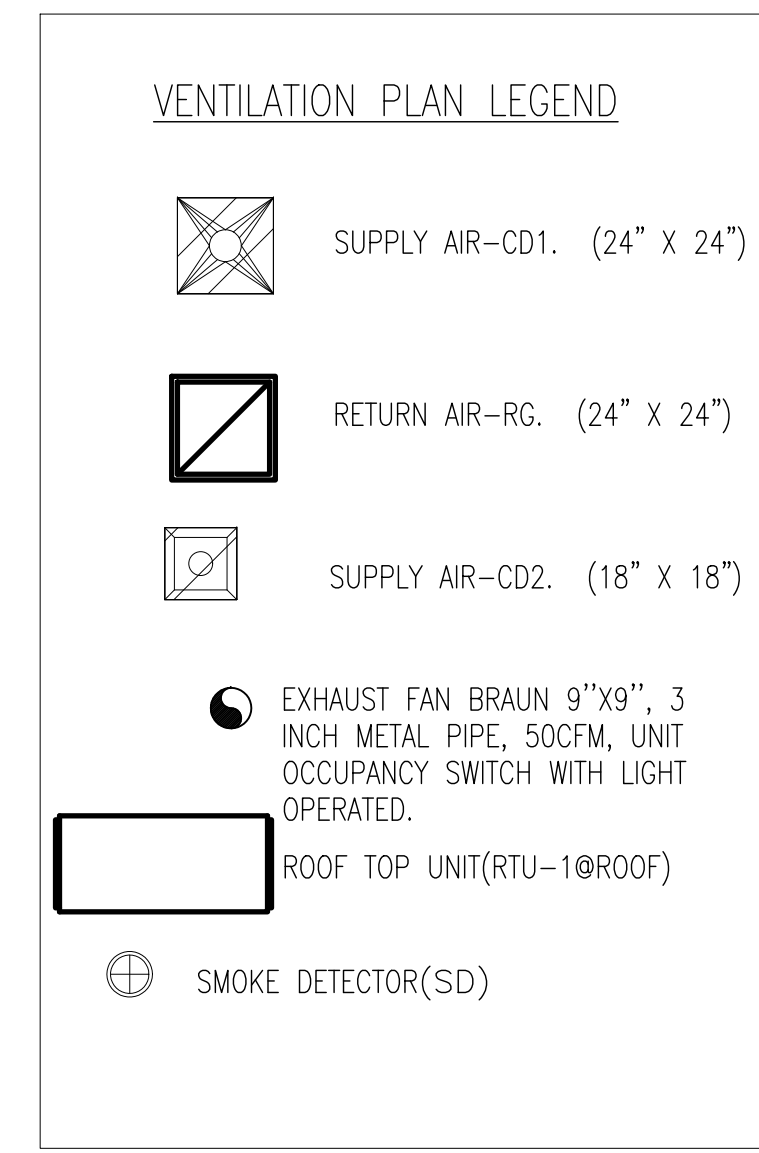
- ALL HVAC WORK TO BE DONE IN ACCORDANCE WITH THE 2015 IBC (MECHANICAL) CODE, INCLUDING ALL STATE AND LOCAL CODES.
- ALL PERMIT APPLICATIONS SHALL BE APPLIED FOR. ALL FEES SHALL BE PAID FOR BY THE GENERAL CONTRACTOR FOR APPLICABLE WORK. ALL INSPECTIONS SHALL BE SCHEDULED AND COMPLETED. VERIFY PERMIT FEES WITH THE GENERAL CONTRACTOR.
- THIS CONTRACTOR SHALL WARRANT THE OWNER, IN WRITING, FOR ALL THE MATERIAL AND LABOR FOR A PERIOD OF ONE YEAR FROM THE DATE OF THE OWNER ACCEPTANCE. COMPRESSORS SHALL BE WARRANTED FOR FIVE (5) YEARS.
- ALL DRAWINGS ARE DIAGRAMMATIC AND DO NOT SHOW STRUCTURAL MEMBERS, CHANGES IN CEILING HEIGHT, LIGHTS, OR ANY NUMBER OF OTHER NECESSARY ITEMS WHICH MAY INTERFERE WITH THE EXACT INSTALLATION AS REPRESENTED ON THE DRAWINGS. THIS CONTRACTOR IS EXPECTED TO COMPLETE THE INSTALLATION AS REQUIRED WITH WHAT EVER MODIFICATIONS THAT ARE NECESSARY TO AVOID THE CONFLICTING ITEM. CONTRACTOR SHALL VERIFY SPACE CONDITIONS AND DIMENSIONS AND SHALL COORDINATE WORK WITH ALL OTHER TRADES. PRIOR TO FABRICATING DUCT WORK OR INSTALLING EQUIPMENT OR PIPING.
- PROVIDE THE OWNER WITH REPRODUCIBLE "AS-BUILT" DRAWINGS AT THE COMPLETION OF THE PROJECT. ALSO PROVIDE THE OWNER WITH CATALOG CUTS OF ALL ITEMS OF EQUIPMENT WHICH HAVE MOVING PARTS, AND ENCLOSE IN A 3-RING BINDER AS THE OWNER'S MANUAL. PROVIDE A TEST AND BALANCE REPORT OF AIR QUANTITIES, FREQ. PRESSURES, AMPERAGE DRAWS, AND AIR TEMPERATURES BEFORE FINAL PAY REQUEST. PROVE HEATING AS WELL AS COOLING.
- DUCTWORK SHALL BE 1" THICK FIBERGLASS DUCT, WITH AN "R" FACTOR = ALL JOINTS ARE TO BE SHIP-LAPPED AND SECURED WITH OUTWARD CLINCHING STAPLES 4" O.C. ON ALL JOINTS AND SEAMS. SEAL FOIL BARRIER WITH MANUFACTURER APPROVED 2" WIDE FIBERGLASS GAUZE AND TWO COATS OF MASTIC. SUPPORT WITH TRAPEZOID HANGER OR RIGID SUPPORT EVERY 4 FT.. FABRICATE PER SMACNA LOW VELOCITY DUCTWORK MANUAL.
- FLEX DUCT TO BE BATT INSULATION OF R-6 VALUE, WITH EXTERNAL VAPOR BARRIER AND INTERNAL SPRING STEEL HELIX AND INTERNAL POLYETHYLENE LINER. SECURE AT MAIN TRUNK DUCT WITH A SPIN-IN-FITTING BY THE LATEST METHODS AS APPROVED BY THE MECHANICAL INSPECTORS. SUPPORT FLEX DUCTS EVERY 4 FT. WITH HANGERS OR SECURE TO BAR JOIST. THREAD FLEX DUCTWORK THRU OPEN BAR JOISTS WHEN POSSIBLE.
- ACCEPTABLE DIFFUSER AND REGISTER MANUFACTURERS ARE METAL-AIR, ENVIRO-AIRE, AIR GUIDE, TUTTLE & BAILEY AND CARNES. PROVIDE A CLEAN SET OF FILTERS WHEN THE PROJECT IS TURNED OVER TO THE OWNER. FILTER RACKS AT THE A.H.U.'S ARE TO BE TAPED UP WITHOUT ANY FILTER. FILTRATION POINT IS AT THE RETURN AIR GRILLE IN ALL CASES. PROVIDE A LIST OF FILTER SIZES FOR THE OWNER ALONG WITH A CLEAN SET OF WASHABLE FILTERS AT TIME OF TURN-OVER.
- ALL SUPPLY COLLARS AT ROUND DUCT BRANCHES TO BE WITH BELL MOUTH FITTING, VOLUME DAMPER, AIR SCOOP AND INSIDE AND OUTSIDE CLAMPING RINGS.
- ALL DUCT DIMENSIONS INDICATED IN THE DRAWINGS ARE CLEAR AIRSIDE DIMENSIONS.
- PROVIDE READY ACCESSIBILITY TO DAMPERS AND OTHER PARTS OF THE SYSTEM REQUIRED TO BE REACHED FOR MAINTENANCE OR OPERATIONS.
- VERIFY ALL VOLTAGES WITH ELECTRICAL CONTRACTOR BEFORE ORDERING ANY EQUIPMENT.
- OUTSIDE AIR QUANTITIES TO BE MATCHED TO THE O.A. LISTING ON THE PLANS.
- DO NOT SCALE DRAWINGS.

Mechanical Equipment Schedule				FAN SECTION				COOLING SECTION			ELECTRIC HEAT SECTION		ELECTRICAL REQUIREMENTS		
#	Description	Manufacturer	Model#	IEER	CAPACITY (CFM)	MOTOR (H.P.)	EXTERNAL S.P.	O.A. (CFM)	SENSIBLE CAPACITY	TOTAL CAPACITY	COMP (#)	HEATER KW	VOLTS	Ø	MCA/MOCP
RTU-1	6 Ton	Carrier	50HC-A07A2B5-0A0A0	13.2	2400	2	.0.83	300	56.92	75.22	2	12KW	208	3	53 60

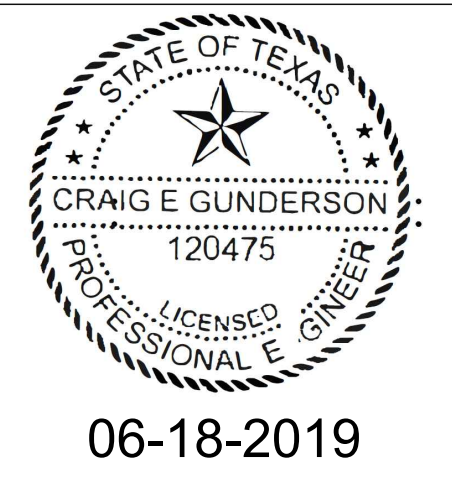
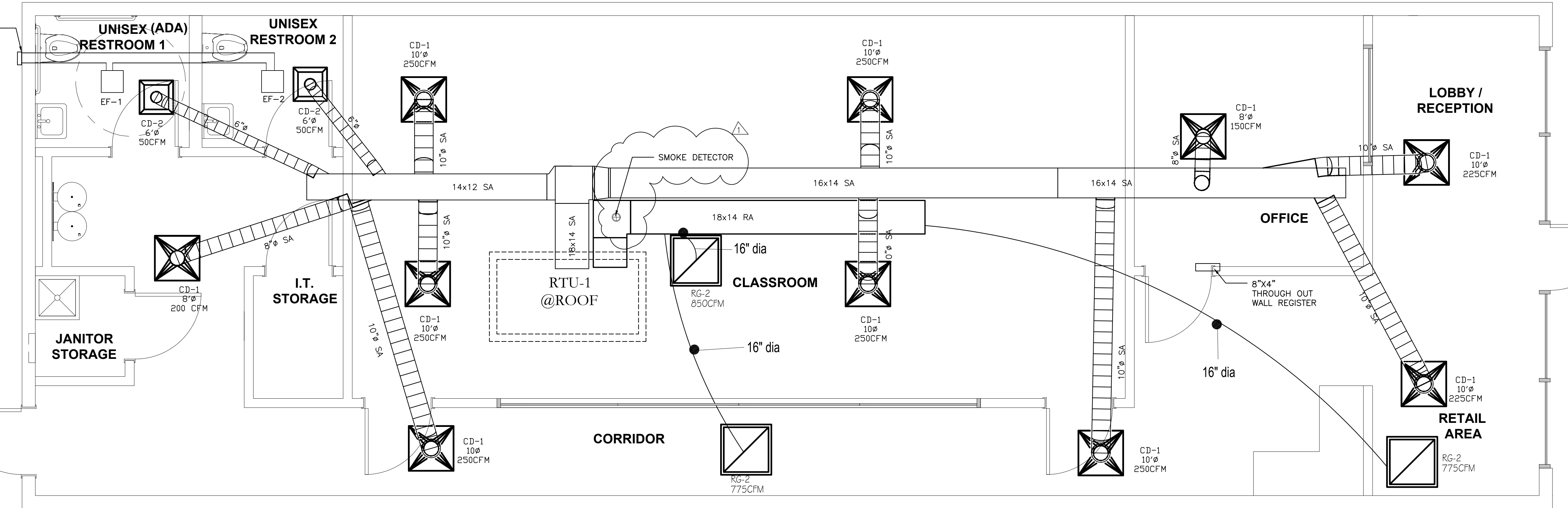
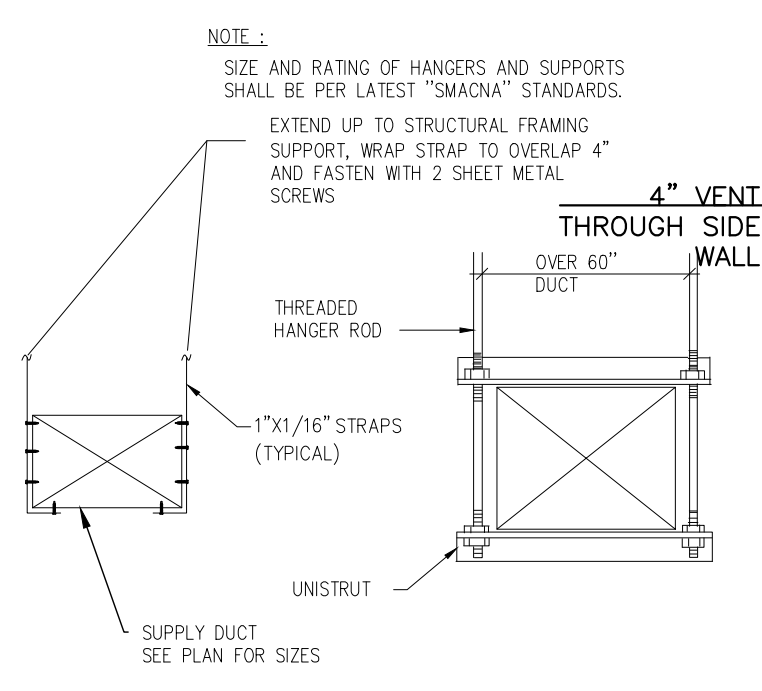


CFM	FLEX SIZE Ø INCH
0-50	4
51-100	6
101-200	8
201-400	10
401-600	12
601-900	14
901-1300	16

PER TABLE 403.3 IBC CODE						
OCCUPANCY CLASSIFICATION	SF	OCCUPANT DENSITY	RP	RA	REQ. OA	PROVIDED BY
RETAIL AREA/ LOBBY RECEPTION	242	15	7.5	0.12	57.0	
CLASSROOM	555	25	10.0	0.12	206.0	
OFFICE AREA	110	5	5.0	0.06	10.0	
CORRIDOR	570	0	0	0.06	35.0	
TOTAL					296.0	



UNIT	AIR BALANCE SCHEDULE						AREA SERVED
	HVAC SUPPLY DESIGN	HVAC RETURN DESIGN	HVAC OUTDOOR DESIGN	MAKE-UP DESIGN	EXHAUST DESIGN	GENERAL DESIGN	
RTU	2400	2100	300				
EF-1					70		
EF-2					70		
TOTAL	2400	2100	300	0	140	0	
OA				0	140		



**Lightning Engineering, LLC**  
 4456 TAMAMI TRAIL UNIT B14  
 PORT CHARLOTTE, FL 33980  
 PH: 941-391-5980  
 FAX: 941-391-5985

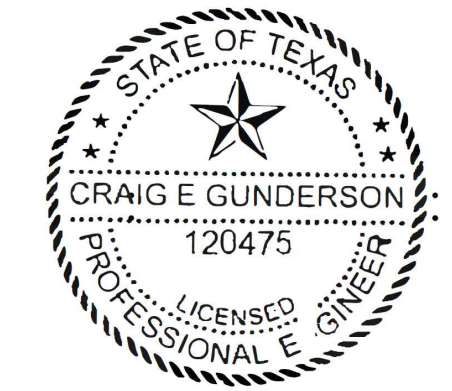
I HEREBY CERTIFY AS THE BUILDING DESIGN ENGINEER OF RECORD, THAT THE BUILDING DESIGN AS SHOWN ON THESE PLANS AND AS ACCOMPANIED BY DESIGN & SUPPORT DOCUMENTS CONFORMS TO THE 2015 INTERNATIONAL BUILDING CODE. THIS CERTIFICATION DOES NOT INCLUDE ROOF TRUSS COMPONENTS OF WISH. THE TRUSS DESIGN ENGINEER IS THE ENGINEER OF RECORD. THE PLANS HAVE BEEN PREPARED IN COMPLIANCE WITH THE 2015 INTERNATIONAL BUILDING CODE WITH SUPPLEMENTS.

**LAUNCH AFTER SCHOOL**  
 202 WALTON WAY, CEDAR PARK, TX 78613

PROJECT NO:1913354

**MECHANICAL**  
 SCALE: PER PLAN

DRAWN BY: BK	PAGE:
REVISION 1: DATE	REVISION 2: DATE
SCALE: PER PLAN	M001



06-18-2019

**Lightning Engineering, LLC**  
 4456 TAMiami TRAIL UNIT B14  
 PORT CHARLOTTE, FL 33980  
 PH. 941-391-5980  
 FAX 941-979-8195

I HEREBY CERTIFY AS THE BUILDING DESIGN ENGINEER OF RECORD, THAT THE BUILDING DESIGN AS SHOWN ON THESE PLANS AND AS ACCOMPANIED BY DESIGN & SUPPORT DOCUMENTS CONFORMS TO THE 2015 INTERNATIONAL BUILDING CODE. THIS CERTIFICATION DOES NOT INCLUDE ROOF TRUSS COMPONENTS OF WISH. THE TRUSS DESIGN ENGINEER IS THE ENGINEER OF RECORD FOR THIS PROJECT AND IS IN COMPLIANCE WITH THE 2015 INTERNATIONAL BUILDING CODE WITH SUPPLEMENTS.

**LAUNCH AFTER SCHOOL**  
 202 WALTON WAY, CEDAR PARK, TX 78613

PROJECT NO: 1913354

**PLUMBING PLAN**  
 SCALE: PER PLAN

DRAWN BY: BK	PAGE:
REVISION 1: DATE	REVISION 2: DATE
SCALE: PER PLAN	PL001

**WATER**

1. ALL WATER PIPING TO BE SCHED 40 CPVC.
2. PROVIDE ISOLATION VALVES TO ALL PLUMBING FIXTURES INSTALLED.
3. PROVIDE BACK FLOW PREVENTION DEVICE TO ALL EQUIPMENT WATER CONNECTIONS.
4. COLD WATER ONLY.
5. NO UNDER SLAB JOINTS IN WATER PIPING.
6. PROVIDE ISOLATION VALVES TO CW AND HW FOR MOP SINK.
7. PROVIDE WATER HAMMER ARRESTOR TO ICE CUBE MACHINE.

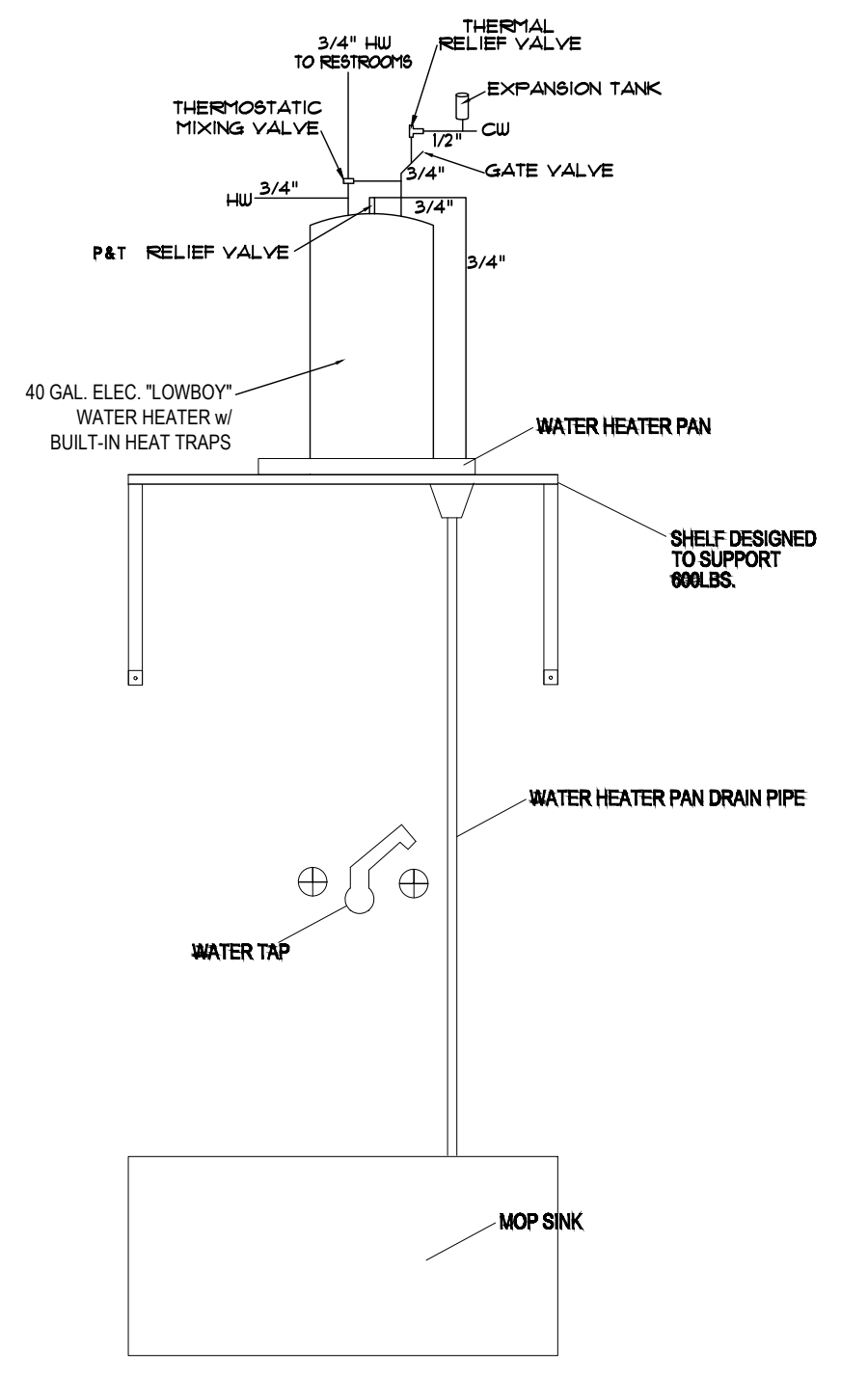
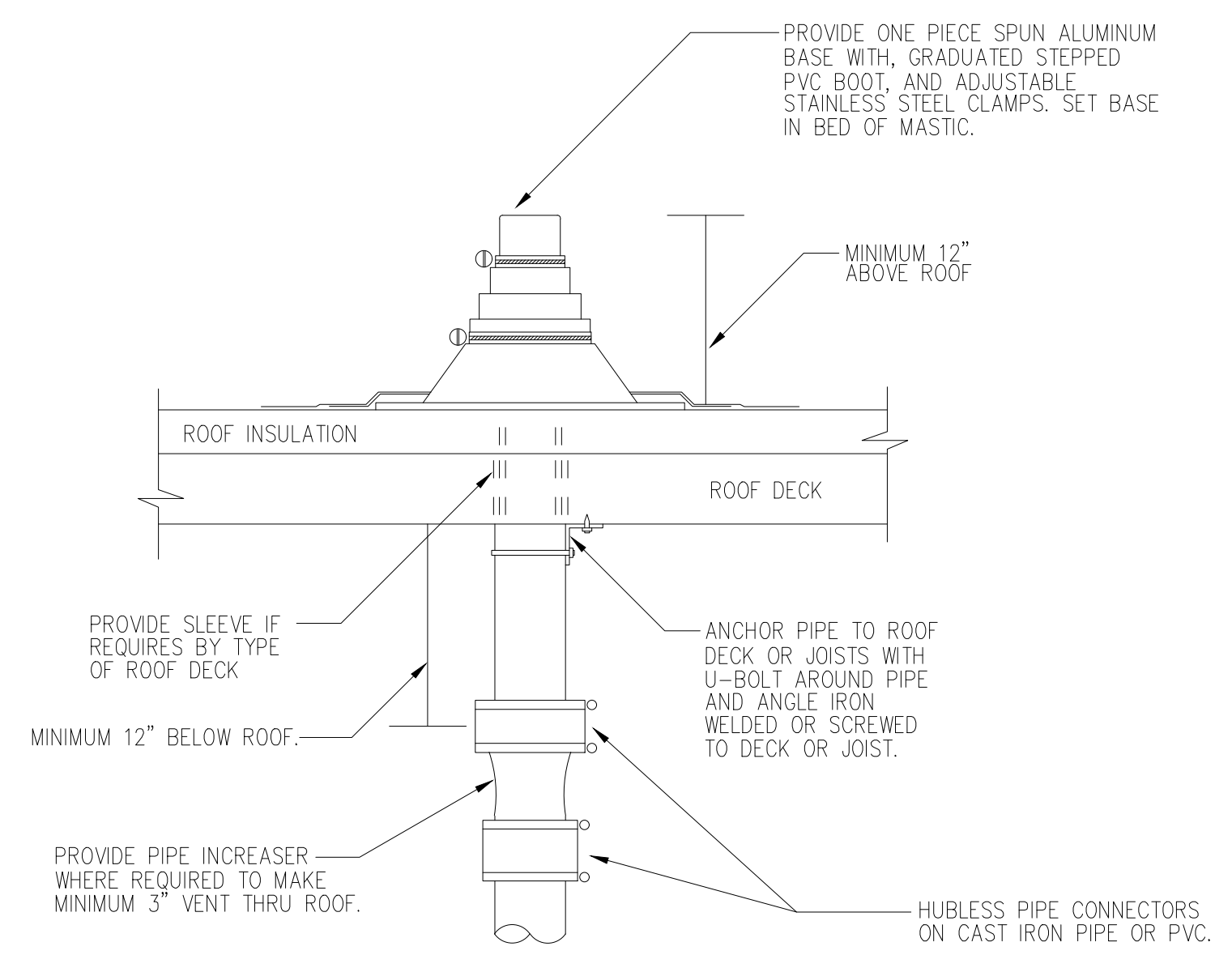
**SANITARY**

ALL DWV SANITARY LINES TO BE SCHED 40 PVC.

FIXTURE CONNECTION SIZE (INCH)			
LEGEND	NAME	WATER	SANITARY
WH	WATER HEATER	3/4"	
WC	WATER CLOSET	1/2"	3"
LAV	LAVATORY	1/2"	2"
S	SINK	1/2"	2"
VTR	VENT TO ROOF		

TABLE 604.4  
 MAXIMUM FLOW RATES AND CONSUMPTION FOR PLUMBING FIXTURES AND FIXTURE FITTINGS

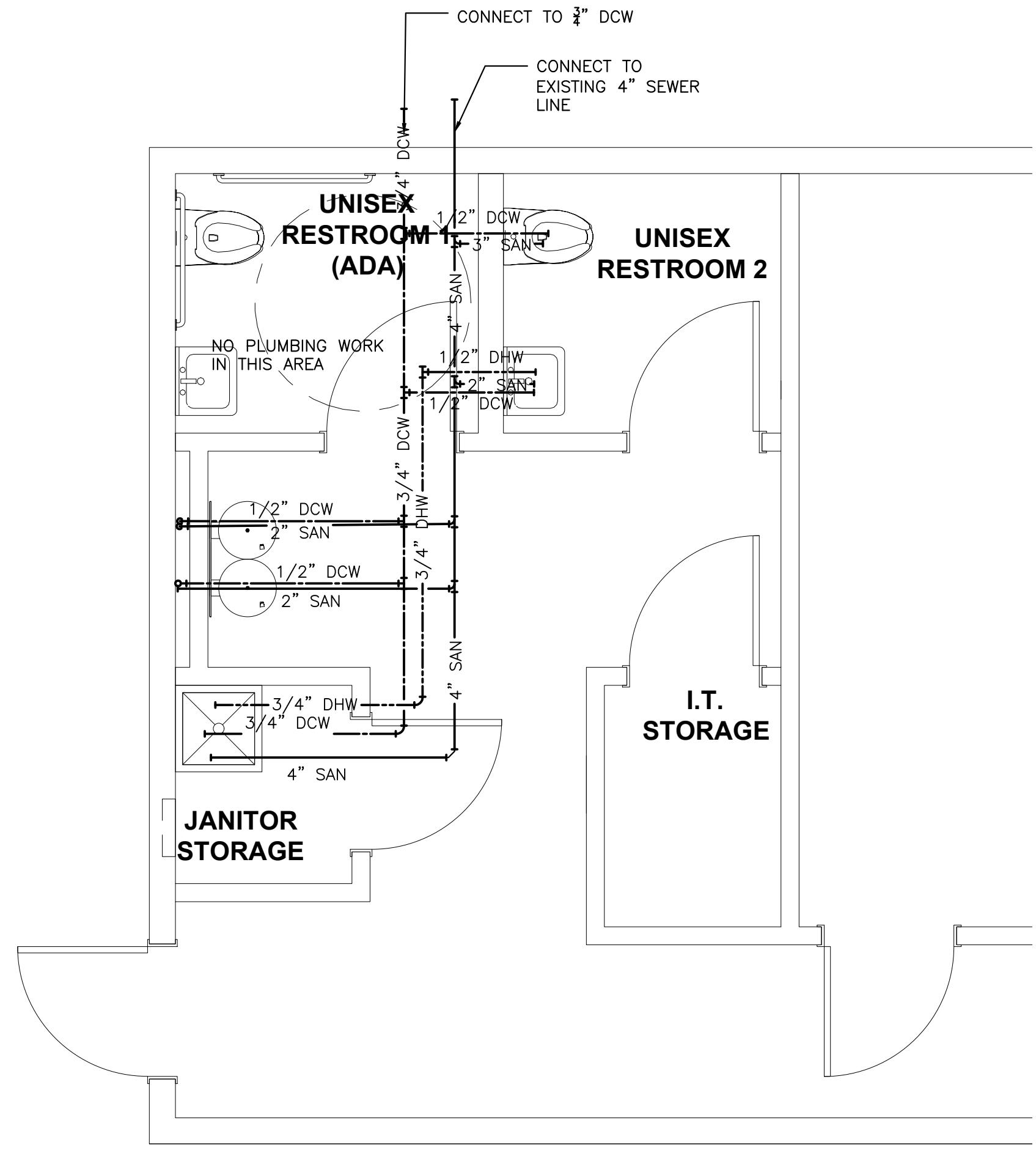
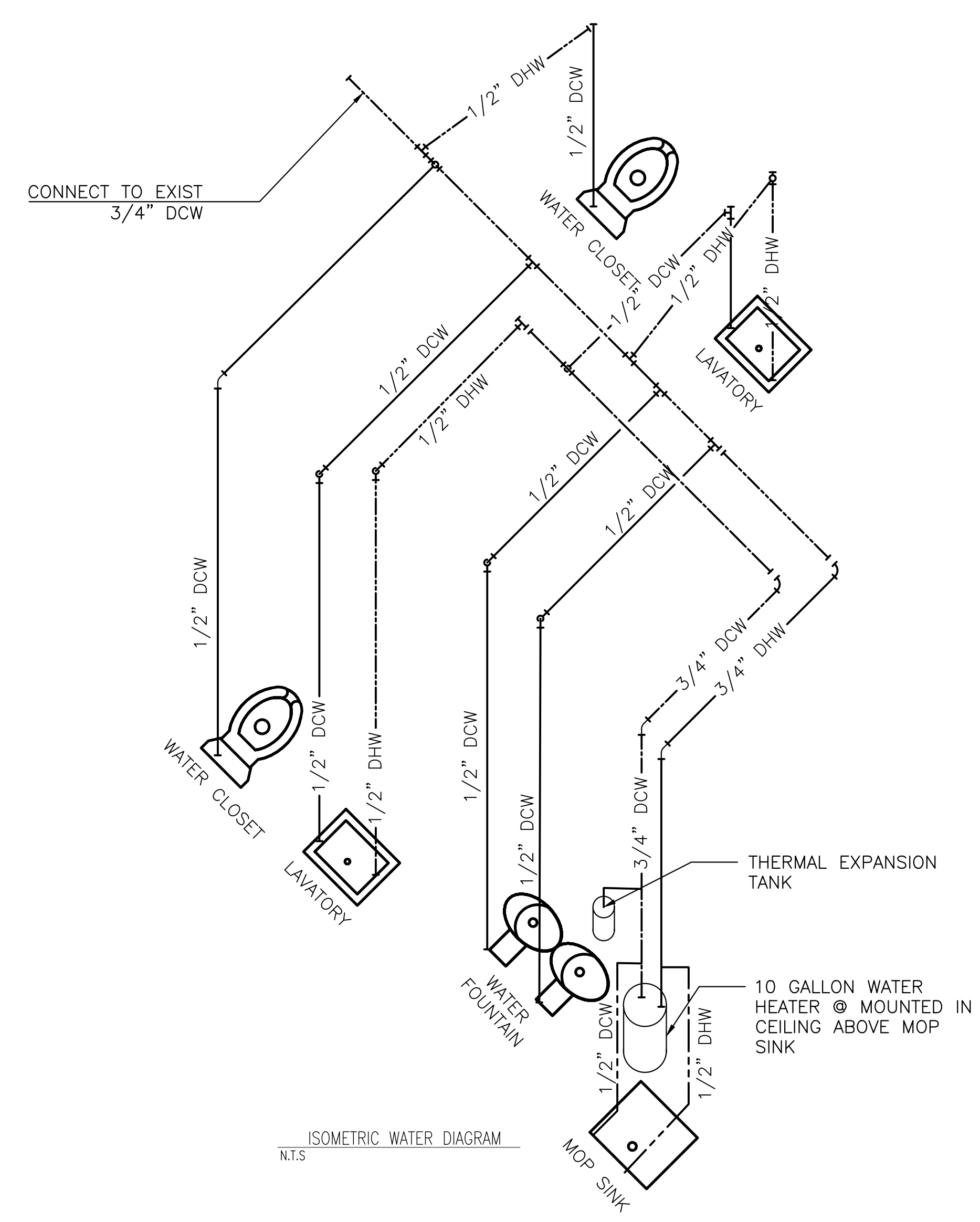
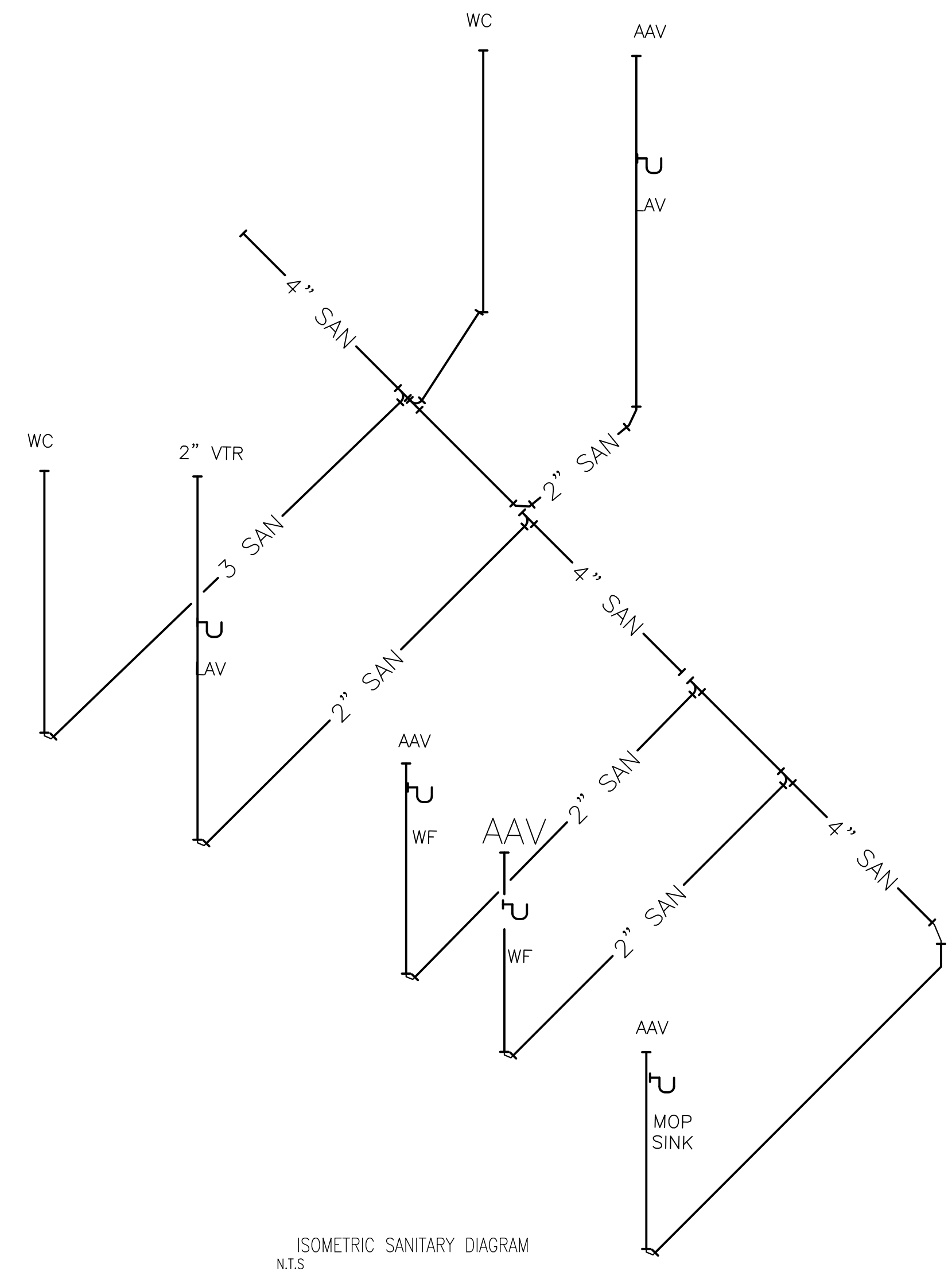
PLUMBING FIXTURE OR FIXTURE FITTING	MAXIMUM FLOW RATE OR QUANTITY
LAVATORY, PUBLIC, (METERING)	0.25 GALLON PER METERING CYCLE
LAVATORY, PUBLIC, (OTHER THAN METERING)	0.5 GPM AT 60 PSI
URINAL	2.2 GPM AT 60 PSI
SINK FAUCET	1.0 GALLON PER FLUSHING CYCLE
WATER CLOSET	1.6 GALLONS PER FLUSHING CYCLE



WATER HEATER INSTALLATION DETAIL  
 N.T.S.

REFER TO PLANS FOR VTR PIPE SIZES AND LOCATIONS. LOCATE VENT THRU ROOF MINIMUM TEN FEET HORIZONTAL OR THREE FEET VERTICAL ABOVE ANY BUILDING OPENING OR FRESH AIR INTAKE, AND ONE FOOT FROM ANY VERTICAL SURFACE. PROVIDE 1" FIBERGLASS INSULATION WITH ALL-SERVICE JACKET ON VENT PIPE INSIDE BUILDING WITHIN SIX FEET OF VENT THRU ROOF LOCATION. VERIFY FLASHING AND COUNTER FLASH WITH ROOFING CONTRACTOR.

VENT THRU ROOF (VTR) DETAIL  
 NOT TO SCALE



**1 PLUMBING PLAN**  
 SCALE: 3/8"=1'-0"